

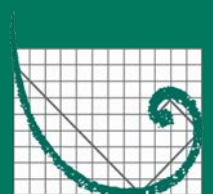


Paling Yards Wind Farm

Community and Stakeholder Engagement Plan
Prepared for GPG Australia

Last updated August 2022

The Business of
Sustainability



ERM

Document details	
Document title	Paling Yards Wind Farm
Document subtitle	Community and Stakeholder Engagement Plan
Project No.	
Date	12 August 2022
Version	5.0
Author	ERM
Client Name	Global Power Generation Australia

Document history

Version	Revision	Author	Reviewed by	ERM approval to issue		Comments
				Name	Date	
Draft	1.0	KJA	Sara Wilson	Sara Wilson	27/01/21	
Draft	2.0	KJA	Sara Wilson	Sara Wilson	02/03/21	
Final	3.0	KJA	Sara Wilson	Sara Wilson	23/03/21	
Update	4.0	KJA	Ruby Culley	Sara Wilson	14/09/21	
Update	5.0	ERM	Ruby Culley			

This document has been prepared by ERM, on behalf of Global Power Generation Australia.

Front cover image: Wind turbines, Taralga, NSW. Supplier: Shutterstock

© Copyright 2022 by ERM Worldwide Group Ltd and / or its affiliates ("ERM").
All rights reserved. No part of this work may be reproduced or transmitted in any form,
or by any means, without the prior written permission of ERM

Contents

1.	Introduction	4
1.1.	Project overview	4
1.2.	Objectives.....	5
1.3.	Project specifics.....	5
1.4.	Project timeline.....	6
2.	Stakeholder identification and mapping	7
3.	Summary of consultation to date	11
3.1	Consultation overview	11
3.2	Key issues raised	13
4.	Risk identification and mitigation strategies	16
5.	Key messages	18
6.	Communication and engagement tools	21
7.	Protocols and processes	24
8.	Communication and Engagement Action Plan	25
	Appendix A – IAP2 Spectrum	27
	Appendix B –Stakeholder and Community Engagement Activities Calendar.....	28

1. Introduction

1.1. Project overview

Global Power Generation Australia (GPG Australia) is seeking State Significant Development (SSD) approval for the construction and operation of a wind energy facility known as the Paling Yards Wind Farm (the Project). The proposed site is located across three landholdings (Mingary Park, Middle Station, Paling Yards and Hilltop) that comprise a total of approximately 4,600 hectares located in the Central Tablelands of NSW. It sits within the Oberon Local Government Area and is approximately 60km south of Oberon and 60km north of Goulburn. The closest towns are Porters Retreat (population approximately 180) and Curraweela (population approximately 320).

The Project contains a proposed transmission line corridor approximately 9km in length and 70 metres in width, crossing several parcels of land. The site is heavily undulating with some steep slopes. The site is bisected (and accessed) by Taralga Road, which links the towns of Oberon and Goulburn, and is a council-maintained road. Several watercourses traverse the area, including the Abercrombie River which forms part of the southern boundary of the site and flows into the Lachlan River.

An application was originally lodged in 2010 for the construction, operation and maintenance of up to 59 wind turbines and ancillary infrastructure, with a final EIS submitted in 2014. Considerable previous community consultation was undertaken to support that application, which is summarised in Section 3 of this plan. In June 2020 the application was withdrawn following further discussions with the former Department of Planning, Industry and Environment (DPIE), with the agreement that due to the advancements in the design of wind turbine technology and the amount of time that had passed since the original submission, the best approach would be to submit a new application for assessment based on a revised design and current legislative requirements. The new design includes a reduction in the number of wind turbines.

Since the original application there has also been significant global shocks and changes in stakeholder needs and expectations. These include severe drought and bushfires that have affected many regional areas throughout NSW, together with the impacts of the COVID-19 global pandemic. In response to these challenges, communities are seeking to stimulate their local economy, deliver jobs and support tourism. Whilst governments implement strategies to invigorate and streamline regional development and investment in response, communities and stakeholders may also be sensitive to perceived 'fast tracking' of development. Some may also have heightened sensitivities relating to non-locals arriving in their community and the potential spread of the COVID-19 virus into regional areas.

Although wind farms help address climate change, create new jobs and diversify the region's and State's economy, there are differing views and concerns the community and stakeholders may hold about the proposed development. The Community and Stakeholder Engagement Plan (CSE Plan) has been developed to ensure the Project follows best-practice community engagement approaches and delivers a comprehensive program of engagement activities for the scoping and EIS phases, as well as engagement actions throughout the project's lifecycle.

The CSE Plan will inform and support the Project's community engagement process.

This Plan was prepared based on the information available at the time, and updated as part of the Environment Impact Statement to be submitted to the New South Wales Department of Planning and Environment, following receipt of the Secretary's Environmental Assessment Requirements (SEARs) in March 2022.

1.2. Objectives

The intention is to provide ongoing opportunities for Project representatives to engage with stakeholders in an open, equitable, inclusive and comprehensive manner, with the aim being to design and construct a wind farm that becomes part of the social fabric of the region through employment, business support and community investment.

The objectives of the CSE Plan are to:

- Provide a guide for the planning and implementation of communications and stakeholder engagement in support of approval for the project;
- Provide an indication of the intended communications and engagement activities to be undertaken during the planning phase;
- Identify and classify stakeholders with an interest in the Project;
- Develop and implement a clear action plan for future engagement approaches across all stakeholder groups;
- Outline communication tools, channels and a timeline for implementation;
- Provide clear, consistent and compelling messaging about the benefits of the Project;
- Identify opportunities for stakeholders and the community to raise concerns and provide feedback;
- Identify opportunities to build positive sentiment across local media, residents and stakeholders; and
- Identify opportunities to reduce or mitigate the risk of community resistance to the Project.

1.3. Project specifics

The new proposal consists of:

- Up to 47 wind turbines, with capacity per unit up to 6.6MW, giving a total capacity of up to 310MW;
- An approximate blade tip height of up to 240 metres;
- Maximum blade length of 83.5 metres;
- Upgrades to existing local road infrastructure including several access points from Abercrombie Road;
- Internal unsealed tracks for vehicle access to turbines and infrastructure;
- An underground electrical and communication cable network linking turbines to each other and the proposed on-site substation;
- Up to three wind monitoring masts fitted with various instruments such as anemometers, wind vanes, temperature gauges and potentially other electrical equipment;
- A temporary batching plant to supply concrete for the foundations of the turbines and other associated structures;
- Obstacle lighting to selected turbines (if required);
- Removal of native vegetation and additional vegetation planting to provide screening (as required);
- Control room and facilities buildings;

- An on-site electrical substation and approximately 9km of overhead powerline (approximately 70 metres in width and poles spacing 200 – 250metres) of up to 500kV to connect to the Mt Piper to Bannanby 500kV transmission line (including control room and other associated grid connection facilities); and
- All associated and ancillary uses and activities.

1.4. Project timeline

Phase / Milestone	Timeframe
Project inception	December 2020
Scoping Report submission	September 2021
Secretary’s Environmental Assessment Requirements (SEARs)	March 2022
Environmental Impact Statement submission	September 2022
Construction expected to commence	Mid 2023 (24 months)
Wind farm operational	2025 - 2055

2. Stakeholder identification and mapping

Communities of interest and key stakeholders with statutory responsibility or other interests have been identified to enable a tailored approach and enable stakeholders to be a part of the project planning and development process with the opportunity to ask questions and engage in a meaningful way. The following primary, secondary and tertiary stakeholder groups have been identified as part of this Plan and are identified in **Table 2.1** to **Table 2.3**.

The Paling Yards Wind Farm draws on the International Association of Public Participation's (IAP2) engagement spectrum to guide suitable levels of engagement – ranging from low to high stakeholder impact and decision making (inform, consult, involve, collaborate, empower). IAP2 is considered the gold standard for community engagement frameworks. Appendix A of this document explains IAP2's Public Participation Spectrum in more detail.

Regular update of the stakeholder map will be undertaken and amendments to the communications and engagement plan made as required.

Table 2.1 Primary Stakeholder Groups

Stakeholder	Specific parties	Form of Consultation, Potential Interests/Concerns
Host landowners <i>IAP2 engagement level: Consult</i>	Landowners with the potential to host infrastructure, have already engaged in discussion or have already agreed to host infrastructure.	Individual consultation, access to private land, noise and other operational impacts including impacts on livestock, visual amenity, health and safety, security, construction disruption, remuneration, land value.
Immediate neighbours <i>IAP2 engagement level: Consult</i>	Neighbouring dwellings within 5km of the proposed site and along the transmission corridor.	Individual consultation, access to private land, local character, noise and other operational impacts, visual amenity, property values, health and safety, security and privacy, construction disruption, impacts of construction traffic.
Surrounding communities <i>IAP2 engagement level: Consult</i>	Community members who live outside of a 5km radius of the proposed site and the transmission corridor, including Porters Retreat and Curraweela and surrounds.	Community consultation, community wellbeing, economic benefits / impacts, impacts of construction traffic, health and safety, visual impacts, property values.
Aboriginal communities <i>IAP2 engagement level: Consult</i>	Registered Aboriginal Parties (RAPs) as identified through the Aboriginal Cultural Heritage Consultation Requirements for Proponents (DECCW 2010) including: <ul style="list-style-type: none"> · Pejar LALC 	Community consultation, heritage assessment, ongoing management of cultural values.

Stakeholder	Specific parties	Form of Consultation, Potential Interests/Concerns
	<ul style="list-style-type: none"> Corroboree Aboriginal Corporation Gunjeewong Cultural Heritage Corporation Didge Ngunawal Clan Aboriginal Corporation 	
Approving authority <i>IAP2 engagement level: Consult</i>	Department of Planning and Environment (DPE)	Community feedback, environmental impacts, project approval, regulatory compliance.
Local Council <i>IAP2 engagement level: Consult</i>	Oberon Council: <ul style="list-style-type: none"> Cr Mark Kellam (Mayor) Gary Wallace (General Manager) Mark Hitchenson (Development Planner) Elected Councillors Upper Lachlan Shire Council (adjacent LGA) <ul style="list-style-type: none"> Pam Kensit (Mayor) Colleen Worthy (General Manager) 	Jobs, economic impacts, opportunities for tourism and other industry benefits. Community consultation, community wellbeing, impact on local residents and businesses, economic benefits, impacts on local roads and infrastructure.

Table 2.2 Secondary Stakeholder Groups

Stakeholder	Specific parties	Potential Interests / Concerns
Local community organisations and businesses <i>IAP2 engagement level: inform</i>	Local business (especially tourism or agriculture), Country Women's Associations, Lions & Rotary Clubs, local action groups, tourism organisations, Central West Orana and Far West NSW Business Chamber	Community consultation, community wellbeing, business opportunities, social and economic impacts, environmental impacts, local Indigenous and European heritage objects and values.
State and Federal elected members <i>IAP2 engagement level: engage</i>	Federal: <ul style="list-style-type: none"> Hon Andrew Gee MP (NAT), Member for Calare Hon Chris Bowen MP (ALP) Minister for Climate Change and Energy Hon Tanya Plibersek MP (ALP), Minister for the Environment and Water Hon Catherine King MP (ALP), Minister for Infrastructure, Transport, Regional Development and Local Government 	Jobs, training opportunities, economic impacts on region, community sentiment, community wellbeing, impact on local residents and businesses, economic benefits, impacts on local roads and infrastructure.

Stakeholder	Specific parties	Potential Interests / Concerns
	State: <ul style="list-style-type: none"> · The Hon Paul Toole MP (NAT), Member for Bathurst, Minister for Regional Transport and Roads · The Hon Rob Stokes (LIB), Minister for Infrastructure and Cities · Hon Anthony Roberts (LIB) Minister for Planning · The Hon Matthew Kean MP (LIB), Minister for Energy and Environment · The Hon Stuart Ayres MP (LIB), Minister for Jobs, Investment, Tourism and Western Sydney 	
Federal representatives and agencies <i>IAP2 engagement level: engage and inform</i>	<ul style="list-style-type: none"> · Dept. of Climate Change, Energy, the Environment and Water · Australian Energy Market Operator (AEMO) · Office of the Australian Energy Infrastructure Commissioner · Commonwealth Department of Defence · Civil Aviation Safety Authority (CASA) · Airservices Australia 	Community consultation, project approval, regulatory compliance, environmental impact.
State representatives and agencies <i>IAP2 engagement level: engage and inform</i>	Department of Planning and Environment <ul style="list-style-type: none"> · Biodiversity, Conservation and Science Directorate (BCSD) · Environment Protection Authority (EPA) · Water Group · Water NSW · Heritage NSW Department of Regional NSW <ul style="list-style-type: none"> · NSW National Parks and Wildlife Service (Abercrombie National Park) · Mining, Exploration & Geoscience · Local Land Services (Central Tablelands) Department of Primary Industries <ul style="list-style-type: none"> · Agriculture and Fisheries divisions · Crown Lands Transport for New South Wales (TfNSW)	

Stakeholder	Specific parties	Potential Interests / Concerns
	<p>Department of Finance, Services and Innovation</p> <p>Department of Customer Service - Service NSW</p> <ul style="list-style-type: none"> · NSW Telco Authority <p>Department of Communities and Justice</p> <ul style="list-style-type: none"> · Fire & Rescue NSW · NSW Rural Fire Service 	
<p>Local media outlets</p> <p><i>IAP2 engagement level: inform</i></p>	<p>Newspapers (also online): Oberon Review, Crookwell Gazette (online only), Goulburn Post, Town & Country, The Western Advocate (Bathurst), Western Times</p> <p>Radio: 2BS, ABC Central West, Hit 105.9 Central West, Triple M 105.1 Central West, 99.3 B-ROCK FM</p> <p>Social media: Facebook – Visit Oberon, Oberon NSW 2787 Community Page, Oberon, Bathurst, Lithgow and Surrounds, Oberon Community Page, Goulburn Community Noticeboard, What's on in Goulburn NSW</p>	<p>Community wellbeing, local employment, project updates, community involvement and events.</p>

Table 2.3 Tertiary Stakeholder Groups

Stakeholder	Specific parties	Potential Interests / Concerns
<p>Local schools, religious organisations, clubs</p> <p><i>IAP2 engagement level: inform</i></p>	<p>Schools and religious organisations in the local area that are likely to be impacted, have an interest in the project or could offer a community partnership opportunity</p>	<p>Community wellbeing, impact on local residents and businesses, economic benefits, impacts on local roads and infrastructure.</p>
<p>State and national media</p> <p><i>IAP2 engagement level: inform</i></p>	<p>National and state newspapers, radio and television</p>	<p>Community discontent / protests, safety concerns, environment or heritage impacts, project milestones.</p>

3. Summary of consultation to date

3.1 Consultation overview

The Project was originally proposed by TME Australia in 2002, at which time wind monitoring masts were placed on site to determine the suitability of the wind resource. Once a suitable wind resource was confirmed, the project progressed through a joint venture with Gamesa Energy Australia Pty Ltd (Gamesa) and a consultant team was established in 2004 to prepare an Environmental Impact Statement (EIS) and EPBC referral. Contact and consultation about access and lease discussions with landholders and adjacent neighbours to the proposed site was initiated in early 2004.

A planning focus meeting was held in February 2005 to provide NSW Department of Planning and Infrastructure (DoPI) with a formal brief of the project and to inform the preparation of the Director-General's Requirements (DGRs). However, due to an uncertain investment environment for renewable energy projects, an application was not lodged at that time.

On 18 December 2008, one of the host landowners organised a meeting for relevant project neighbours and community members at the Jerrong/Paling Yards local fire station. Representatives of TME Australia attended the meeting to answer any relevant questions.

In mid 2008, Union Fenosa Wind Australia took over the project from Gamesa.

On 29 October 2009, the Deputy Director General, Development Assessment for the Department of Planning, under delegation for the Minister for Planning, determined that the project was a project to which Part 3A of the EP&A Act applied. A Part 3A application was subsequently lodged. Union Fenosa Wind Australia Pty Ltd (later GPG) lodged a Preliminary Environmental Assessment on 9 April 2010 for the construction, operation and maintenance of up to 59 wind turbines and ancillary infrastructure. On 9 October 2012 an advertisement in the local newspaper Crookwell Gazette was published to invite people to nominate for the project Community Consultative Committee (CCC).

GPG Australia developed a community consultation and engagement program that aimed to provide the community and stakeholders with factual information about the project and gathering feedback about their concerns and interests, which can be subsequently addressed in the approvals process and influence the project design. In order to meet the information needs of the community, a range of consultation strategies were adopted and undertaken, including:

- Consultation with government departments and agencies, non-government agencies, community groups and individuals.
- Direct contact with identified community groups.
- Door-knock consultations undertaken within 5km of the site and along the corridor of the proposed transmission line routes.
- Community newsletter distributed to the local area and anyone registering interest in the project.

A key step in the stakeholder identification process and community consultation was undertaken through the door-knock consultation and surveys carried out by GPG Australia representatives on 30 and 31 May and 1 June 2011 and again on 5 and 6 July 2011.

On 27 September 2012, letters were sent out to all non-involved properties within a 2km buffer of the proposed turbines to inform them of the proposed project.

An EIS was submitted in 2014, reducing the number of turbines to 55 based on community feedback and consultation. The proposed Paling Yards Wind Farm EIS was on public exhibition from 28 March 2014 to 30 May 2014 at seven locations. They were:

- NSW DPIE (Information Centre), 23-33 Bridge Street, Sydney);
- Taralga Community Service Centre, 29 Orchard Street, Taralga;
- Oberon Shire Council, 137-139 Oberon Street, Oberon;
- Oberon Shire Council Library, Corner of Dart and Fleming Streets, Oberon;
- Upper Lachlan Shire Council (Crookwell Office), 44 Spring Street, Crookwell;
- Crookwell Library, Denison Street Crookwell; and
- Nature Conservation Council, Level 2, 5 Wilson Street, Newtown.

The public exhibition period was advertised directly by the then NSW Department of Planning and Infrastructure and notified the local community in the vicinity of the project site. In addition the proponent notified, by direct mail, neighbouring landowners within 5-10km of the project site about the public exhibition period and an information session. Some of the immediate neighbouring landowners were also called directly to notify them of the events.

An information session was held on 27 May 2014 to provide community members and other stakeholders with an opportunity to learn more about the Project and ask questions. Consultants that prepared the EIS reports were available to answer inquiries from attendees.

A CCC meeting was organised on 17 July 2014 at the Oberon Council offices. The CCC meeting was attended by proponent representatives, four Council representatives and one community representative. The Council's Planning and Development Director attended the meeting as an observer.

The Proponent was then notified by the Department and requested to respond to the submissions received. As per the *NSW Guidelines on Responding to Submissions*, a submissions report was prepared. The following tasks were undertaken as prescribed by the guidelines:

- Possible refinements to the project were considered
- Assessment of submissions received
- Engagement with respondents and objectors (where possible)
- Determination of any amendments to the project are required (none required)
- Preparation and submission of the report.

Since 2014, the Proponent has been involved in ongoing discussions with some of the objectors. Consideration was given to possible mitigation measures, including drafting neighbour agreements.

In June 2020 the application was withdrawn following further discussions with the Department of Planning, Industry and Environment (DPIE), with agreement that due to the advancements in the design of wind turbine technology and the amount of time that had passed since the original submission, the best approach would be to submit a new application for assessment based on a revised design and current legislative requirements. In July 2020 all landowners and close neighbours were informed of the decision by GPG Australia to withdraw the current application.

In August 2020 Tract Consultants was contracted to commence work preparing a new application for lodgement in mid 2021. In January 2021, calls were made by GPG Australia to property owners within a 5km radius of the proposed project site. The landowners were informed of the intention to submit a new application to DPIE, now the Department of Planning and Environment (DPE).

In August 2021, GPG Australia prepared to undertake a doorknock of neighbouring properties in the vicinity of the proposed site. The door knock was postponed in line with restrictions issued by NSW Health due to the COVID-19 pandemic.

In September 2021, a newsletter was distributed (mail-out and eDM) to neighbours and the two councils, updating the community on the project and provided a link to a community feedback survey, the Paling Yards - Community Feedback 2021 Survey. The survey yielded seven responses from community members.

The Scoping Report was submitted in September 2021, and SEARs issued in March 2022. In May 2022, following receipt of the SEARs, the Project team re-engaged with landowners within 5km of the site with a focus on insights related to visual assessment. GPG Australia also re-engaged with Oberon Council through an online meeting with councilors in 26 July 2022.

The broader community were encouraged to participate in consultation throughout July and into August 2022. Local advertising via traditional media in the Oberon Review, online publication the Crookwell Gazette and radio advertising on 2BS were used to provide details about two community information sessions and encourage people to visit the website and complete a survey.

Community information sessions were staffed by GPG Australia and subject matter experts from Tract, ERM, Transgrid and SLR to respond to any noise related enquiries. There were 22 local community members who attended the community information sessions and 12 surveys completed.

3.2 Key issues raised

In 2014, a total of 24 submissions were received as part of the exhibition process. There were 14 comments submitted by government agencies, and 11 comments submitted by community members. There were at least 10 nearby residents that were not supportive of the original proposal. It will be important to continue to reconnect with these community members and create an environment of transparency.

The key areas of interest raised in submissions to the 2014 application and EIS were noise and vibration impacts; landscape and visual impacts; and impacts on property values. Figure 3.1 details the number of submissions that commented, based on the 2014 EIS application.

It was anticipated that community concerns would continue to be linked to property values, visual amenity for residences, concerns about noise, construction impacts, impacts on the environment, and concerns around decommissioning of the wind farm infrastructure at the end of the project's life.

In July and August 2022, survey respondents and attendees at community information sessions were focused on visual impacts, environment, land use, local roads, community benefits and future engagement.

In accordance with development approvals a comprehensive decommissioning and rehabilitation plan will be prepared to address significant aspects of the decommissioning process, including but not limited to:

- Operational life of the wind farm
- Plan for consultation with landowner(s) to determine which infrastructure should remain after termination of the lease, and stipulate time-frames
- All above-ground infrastructure (site office, turbines, roads)
- Subsurface infrastructure (foundation pads)
- Peripheral infrastructure (Substations, powerlines).

Figure 1 Areas of interest – EIS Application 2014

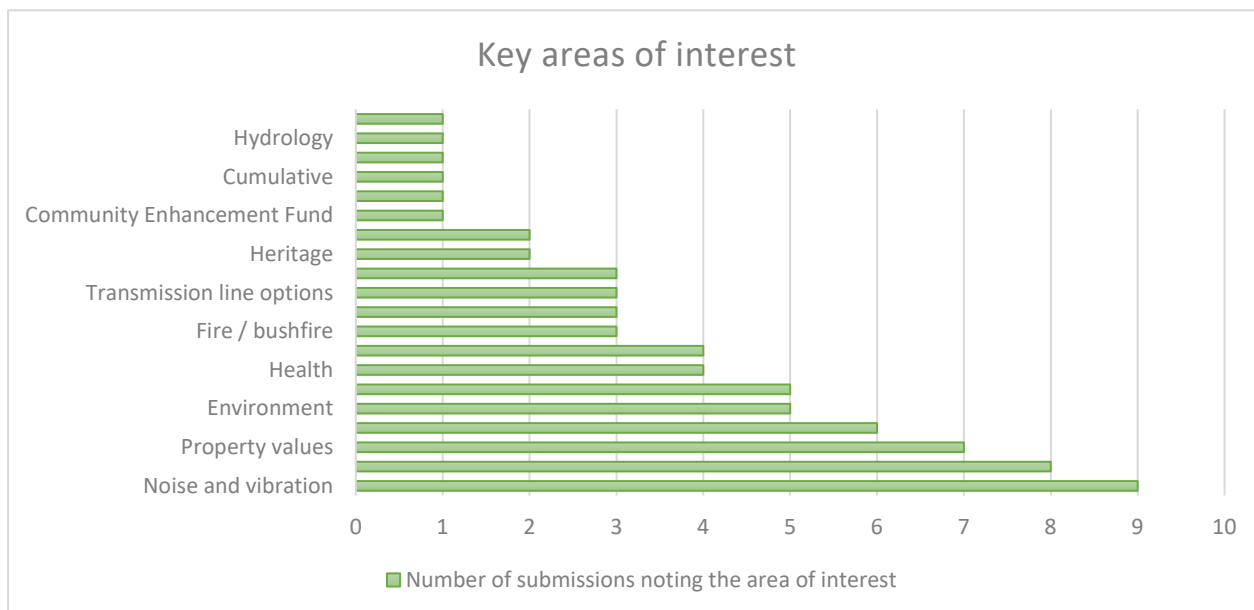


Figure 2 Areas of interest – community feedback survey September 2021

From what you know about the project, and renewable energy projects in general, what are areas of concern for you? Tick one or more.

Answered: 8 Skipped: 1

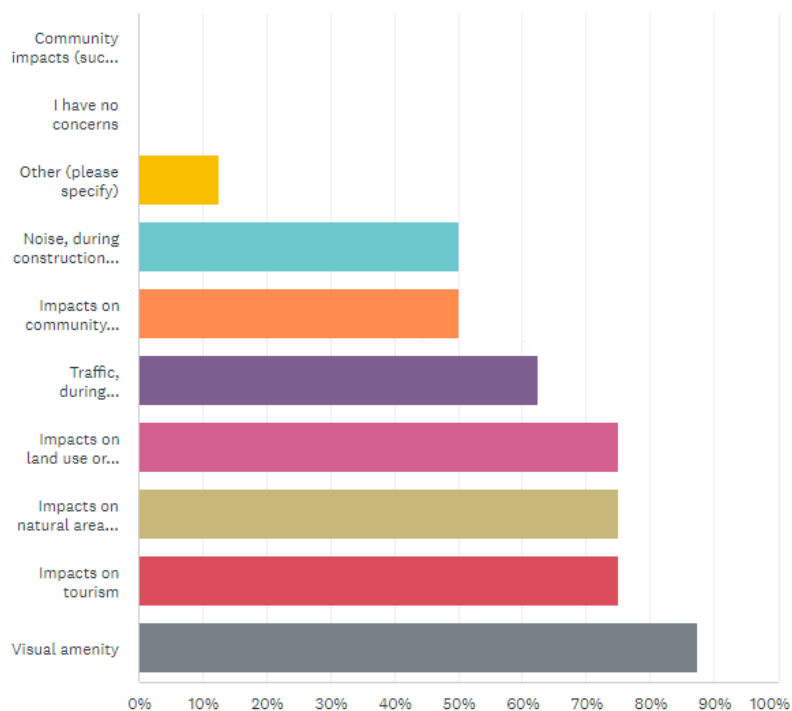
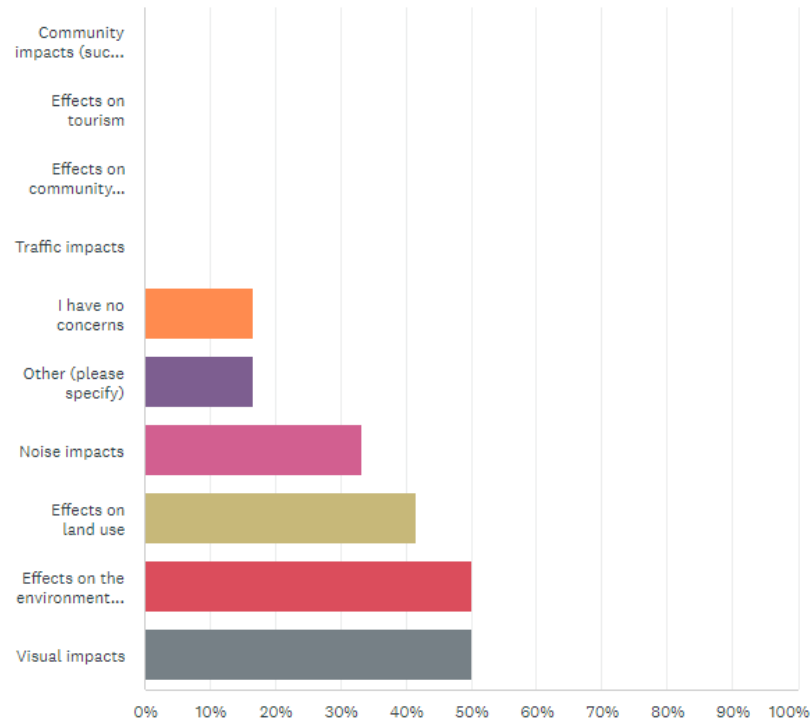


Figure 3 Areas of interest – community feedback survey July 2022

Based on your understanding of the project, and wind farms in general, are there any areas of concern for you? Select up to three.

Answered: 12 Skipped: 0



4. Risk identification and mitigation strategies

The following table outlines the potential project risks, proposed mitigation strategies and communication tools / channels to be utilised throughout the project lifecycle. Please note the risk matrix is a living document and will be regularly reviewed and revised throughout the life of the project to capture, track and respond to issues as they arise.

The project phases during which the risks are likely to be a concern are identified by the following codes:

- P – Planning and approvals phase
- C – Construction phase
- O – Operations phase
- E – End of life planning and management

Table 4.1 Project risks and mitigation strategies

Risk	Project Phase	Mitigation strategy	Tools / Channels
Visual and audible amenity Community objections around the audible and visual impacts of wind turbines.	P, C, O, E	<ul style="list-style-type: none"> · Early and proactive community engagement with nearby residents and the wider community to identify and address any concerns. · The layout for the wind farm is designed to minimise potential visual and audible impact, reflecting community feedback and planning requirements. 	<p>Recommended: Project website, fact sheets, targeted email, newsletters, information sessions, Community Consultative Committee (CCC), complaints and feedback channels.</p> <p>Optional: Social media, site tours and briefings</p>
Access to information: Community members do not have access to adequate and accurate information about the project to keep themselves informed on progress and potential impacts	P, C, O, E	<ul style="list-style-type: none"> · Provide extensive, clear and easy-to-understand information across a range of readily accessible mediums 	<p>Recommended: Project website, newsletters, media releases, information sessions, fact sheets, Community Consultative Committee (CCC), targeted letters / emails / notifications</p> <p>Optional: Social media, site tours and briefings, special interest group meetings and workshops, presentation material</p>
Protection of flora and fauna Concern raised around endangered and threatened species.	P, C, O, E	<ul style="list-style-type: none"> · Provide comprehensive information to counter false or misleading information. · The layout of the wind farm is designed to ensure that impacts on flora, fauna and associated impacts on the 	<p>Recommended: Project website, newsletters, media releases, information sessions, fact sheets, Community Consultative Committee (CCC)</p> <p>Optional: Social media</p>

Risk	Project Phase	Mitigation strategy	Tools / Channels
		environment are avoided or mitigated. <ul style="list-style-type: none"> · Infrastructure and roads are to avoid areas of high conservation significance. 	
Cultural heritage protection Interest in and respect for cultural heritage preservation	P, C	<ul style="list-style-type: none"> · Development of a cultural heritage assessment · Close consultation with indigenous communities to identify any area of particular cultural heritage significance within the project area · The layout of the wind farm is designed to ensure that impacts on known heritage items and areas of cultural significance are avoided. 	Recommended: Project website, newsletters, media releases, information sessions, fact sheets, Community Consultative Committee (CCC) Optional: Social media
Organised community activist campaigns Community protests influencing public opinion of the project.	P, C	<ul style="list-style-type: none"> · Provide communities with comprehensive information to counter false or misleading information. · Preparation of media responses and escalation procedures to avoid potential protest health and safety issues. · Undergo decommission and remediation planning 	Recommended: Project website, newsletters, media releases, information sessions, fact sheets, Community Consultative Committee (CCC) Optional: Social media
Approval process and timing: previous application withdrawn, delays with published timelines for the project	P, C	<ul style="list-style-type: none"> · Ensure that project teams provide an accurate forecast of the project timing for planning, approvals and construction · Update affected parties if any variations occur · Keep published and online material up-to-date and current · Undergo decommission and remediation planning 	Recommended: Project website, newsletters, media releases, information sessions, fact sheets, Community Consultative Committee (CCC), targeted letters / emails / notifications Optional: Social media
Construction Impacts Construction noise, dust and traffic impacts, poor worker behaviour or an influx of workers in the area.	C, E	<ul style="list-style-type: none"> · Early and proactive community engagement to identify potential risks and issues associated with construction. · Dedicated program of communication and engagement with clear consistent messaging. · Radio and/or social media traffic updates (if appropriate) during component deliveries · Provide accurate construction notices with any traffic changes/detours and update affected parties if any variations occur. · A community information line and email address is established to enable reporting of complaints · Continuously improve engagement processes and share lessons learnt. 	Recommended: Project website, fact sheets, targeted email, newsletters, construction notices, complaints and feedback channels, one-on-one communication (phone, email, and in-person) for neighbours directly affected. Optional: Social media, site tours and briefings, information sessions

5. Key messages

The following messages have been developed to support a consistent and coordinated approach to liaising with stakeholders and will be used as the basis for all communications. Please note the key messages will be reviewed, revised and updated at each phase of the project.

Project planning

- In June 2020 a previous application for the Paling Yards Wind Farm was withdrawn to enable GPG Australia (formerly Union Fenosa Wind Australia Pty Ltd) to revise the design for the wind farm in response to community feedback, and to reflect up-to-date wind turbine technology.
- A refreshed application for the proposed Paling Yards Wind Farm was submitted as a State Significant Development (SSD) application in mid-2021.
- Stakeholder engagement has been undertaken to satisfy the SEARs.
- The proposed wind farm will include up to 47 wind turbines (a reduction of 3 wind turbines from the previous application) with an approximate maximum blade tip height of 240m and maximum blade length of 83.5m.
- The project is proposed to consist of the following essential infrastructure:
 - Upgrades to existing local road infrastructure including several access points from Abercrombie Road;
 - Internal unsealed tracks for vehicle access to turbines and infrastructure;
 - An underground electrical and communication cable network linking turbines to each other and the proposed on-site substation;
 - Up to three wind monitoring masts fitted with various instruments such as anemometers, wind vanes, temperature gauges and potentially other electrical equipment;
 - A temporary batching plant to supply concrete for the foundations of the turbines and other associated structures;
 - Obstacle lighting to selected turbines (if required);
 - Removal of native vegetation and additional vegetation planting to provide screening (as required);
 - Control room and facilities buildings;
 - An on-site electrical substation and approximately 9km of overhead powerline (approximately 70 m in width and poles spacing 200 – 250 m) of up to 500kV to connect to the Mt Piper to Bannanby 500kV transmission line (including control room and other associated grid connection facilities); and
 - All associated and ancillary uses and activities.
- GPG Australia is continuing to consult with community and other stakeholders ahead of the application being submitted to DPE, and in keeping with the SEARs.
- The following is the State Significant Development planning process:

- Prepare Scoping Report as part of request for Secretary's Environmental Assessment Requirements (SEAR's);
 - Secretary's Environmental Assessment Requirements (SEAR's) issued;
 - Early engagement with stakeholders to seek input and feedback to inform application;
 - Prepare and submit Environmental Impact Statement (EIS) and associated reports to meet SEARs;
 - EIS exhibited by DPE, public invited to make submissions;
 - Address feedback in Response to Submissions;
 - Consent authority (DPE or Independent Planning Commission, as relevant) makes determination.
- During the EIS exhibition, GPG Australia will support DPE by offering briefings to stakeholders and providing information for the community, as agreed with the Department. The public will be able to provide a written submission to DPE via the NSW Major Projects website.
 - Given the global health emergency created by COVID-19, all engagement and consultation activities will align with government directives, guidelines and recommendations current at the time.
 - Further information is available via the project website www.globalpower-generation.com.au via email info@globalpower-generation.com.au or phone 1800 457 181.
 - GPG Australia is the local subsidiary of the Spanish based Naturgy Group. Naturgy has a long history of successful renewable energy projects around the world in wind, solar, hydro, biomass and other renewable technologies. GPG Australia currently operates Crookwell 2 Wind Farm with a second stage (Crookwell 3 Wind Farm) approved on 14 October 2020. Additional wind farm projects have been planned for several sites in Victoria.

Project benefits

- The proposed Paling Yards Wind Farm will generate local jobs and opportunities to attract new investment to Oberon Shire and Upper Lachlan Shires.
- The proposed wind farm will bring economic benefits to the local and State economy, with an estimated \$600M invested in the region. During the construction phase the project is expected to generate approximately 400 local jobs as well as opportunities for local businesses and suppliers. During the operation of the site, the wind farm is expected to generate four local, long term jobs.
- The proposed project will deliver renewable, low-cost energy to the national grid, and will contribute to the NSW Government's net-zero emissions target by 2050.
- Reduce greenhouse gas emissions by approximately 900,000 tonnes per annum.
- Assist in exceeding the Large-scale Renewable Energy Target (LRET) as well as an eligible generation category under the Renewable Energy Target (RET), supplying approximately 900GWh per annum, or in other terms, power to supply 90,000 average Australian homes'
- Economic stimulus for rural NSW which will help mitigate what are likely to be ongoing economic impacts of the COVID 19 pandemic and the Black Summer bush fires.

- Upgrades to local road infrastructure, including several access points from Abercrombie Road.

Project delivery

- If approved, the Paling Yards Wind Farm is expected to take approximately 24 months to construct, starting in mid-2023
- The Paling Yards Wind Farm owner and operator, GPG Australia, will seek to partner with the local council and community, to identify appropriate initiatives that will deliver benefits for the community.

6. Communication and engagement tools

Table 6.1 provides a list of recommended communication and engagement tools and collateral that can be used to facilitate stakeholder and community engagement. It has been informed by best practice engagement principles and anticipated requirements for the SSD process. Guidance on best practice for community engagement for wind farm projects as been provided by the National Wind Farm Commissioner and can be found online at [Community Engagement | Australian Energy Infrastructure Commissioner \(aeic.gov.au\)](http://www.aeic.gov.au)

Table 6.1 Communication and Engagement Tools

Tools	Description
Stakeholder database	A stakeholder database has been established and is being maintained to capture stakeholder feedback, concerns and enquiries as well as responses and commitments made.
Project website	A project website is in place providing information for stakeholders. The website should include: <ul style="list-style-type: none"> · General project information · A map of the project site · Contact information · Fact sheets · Project updates · Construction updates · Media releases · High quality images and visual of the project · Additional relevant project documentation · Details about upcoming events such as information sessions.
Project email address	A project email address is established and available to stakeholders and the community during the life of the project. The email should have an auto-response acknowledging receipt of the email and advising a response time. Enquiries should be responded to within two business days.
Project phone line	A project information phone line is established and available to stakeholders and the community during the life of the project. The phone line should be available during regular business hours. Outside of business hours, a recorded message and voice mail facility should be available so callers can leave a message.
Project postal address	A project postal address is established and available to stakeholders and the community during the life of the project. This is in recognition of the median age of residents in the local area and to mitigate any digital connectivity concerns for regional and remote areas.
Frequently Asked Questions	A Frequently Asked Questions (FAQ) document aims to provide answers to common stakeholder questions about the Project. The FAQ document should be available on the Project website.
Image library	High-resolution project images and maps should be developed and kept on file for use on the Project website and to provide to media outlets. These should be updated during the life of the project.
Fact sheets	Relevant fact sheets should be prepared for distribution at community engagement sessions and provide tailored project information on various topics. These should also be published on the Project website. Fact sheets should include: <ul style="list-style-type: none"> · Generic wind energy · Wind farms and renewable energy

Tools	Description
	<ul style="list-style-type: none"> · Wind farms and the electricity grid · Wind farm visual and noise impacts · Wind farm health and safety · Wind farm construction
Letters	Letters will be used for formal engagement with directly affected stakeholders. Letters could include relevant updates on the project, and key details such as event/meeting timing and contact details. Letters can be sent out digitally and/or per mail.
Newsletters	Newsletters should provide relevant updates on the Project, community benefits and upcoming engagement activities. Newsletters should be published every six months initially and then quarterly during the construction phase. Initial newsletters will target residences within close proximity to the project site.
Media releases	Media releases will be issued to communicate key Project messages, milestones and announcements. Copies will be provided to relevant media outlets and key stakeholders.
Face-to-face meetings	Face-to-face meetings can take a variety of forms including door knocks, public meetings, stakeholder briefings and site visits. How meetings are delivered will be determined as the Project evolves.
Community information events	Local community information sessions will commence in the scoping and approvals phase and include pop-ups at local community events. Community feedback will be actively sought by means of presentations, face-to-face conversations and surveys.
Project boards	A range of project boards will be designed for use at community events to help inform the community.
Construction updates	During the construction phase, regular and as required construction updates and notifications will be provided via the website and to directly affected stakeholders.
Advertising	Advertising will be used to promote major Project events, milestones and announcements. The Project will consider advertising in local newspapers and on radio.
Social media monitoring	Monitoring of social media channels to understand the sentiment and key areas of interest about the Project within the local community.
Community Consultative Committee (CCC)	<p>NSW planning guidelines encourage the establishment of CCCs to enable engagement with the community and stakeholder groups on SSD.</p> <p>These should be independently chaired with up to seven community and stakeholder representatives, a council representative and up to three representatives from the Proponent.</p> <p>The CCC should meet on a regular basis, with the frequency to be determined. DPE will decide whether a CCC should be established. If DPE decides a CCC is warranted, it will require proponents to establish the committee either:</p> <ul style="list-style-type: none"> · Early in the assessment process through the Secretary's Environmental Assessment Requirements (SEARs) for the project · Following approval through the conditions of approval for the project. <p>NSW Government guidelines for CCCs can be found at: https://www.planning.nsw.gov.au/-media/Files/DPE/Guidelines/Community-Consultative-Committee-Guideline-31-01-2019.pdf</p>
Community benefits fund	NSW planning guidelines encourage establishing and maintaining a community engagement fund and ensure appropriate community involvement in its governance.

Tools	Description
	<p>The community fund should allow for opportunities for community-originated submissions, and clearly include and benefit proximal community members.</p> <p>GPG Australia may consider providing offers for community members to become shareholders in the project.</p> <p>https://www.aeic.gov.au/observations-and-recommendations/community-engagement</p>

7. Protocols and processes

The Paling Yards Wind Farm will apply the following processes and protocols to the proactive management of information sharing throughout the life of the Project.

Table 7.1 Communication and engagement protocols

Project Requirement	Protocol
Written communications protocol, such as fact sheets, FAQs, media release, web content, brochure, newsletter	<ul style="list-style-type: none"> · All material for public distribution will be approved by the Project Team prior to distribution.
Emails, community enquiries and complaint letters	<ul style="list-style-type: none"> · The first standard written response will be approved by the Project team prior to distribution and can be used for relevant subsequent enquiries. · Enquiries, along with responses, will be recorded in the stakeholder and issues database and responded to within two working days. · Stakeholder details to be managed according to the requirements of the Privacy Act 1988. · All enquiries received in writing will be responded to within five working days.
Phone or in-person enquiries	<ul style="list-style-type: none"> · The details of calls or enquiries will be recorded in the stakeholder database. Follow up on phone calls will be completed within two working days.
Media enquiries and spokesperson	<ul style="list-style-type: none"> · Media enquiries will be referred to the Paling Yards Project team. · The Paling Yards Project team will endeavour to meet media enquiry deadlines and to respond in the requested format. · Guillermo Alonso is the Project's Spokesperson. · All responses will be approved by Guillermo Alonso.
Complaint Investigation and Management Process (during construction only)	<ul style="list-style-type: none"> · Complaints, feedback and enquiries can be made through the email or postal address or via the 1800 number. · Where a complaint is received concerning safety or worker behaviour a response should be issued within 24 hours. · For all other complaints, enquiries or feedback responses should be issued within two business days.

8. Communication and Engagement Action Plan

Table 8.1 Communication and Engagement Action Plan Overview

Project phase	Objectives	Planned/completed engagement activities*
Scoping Report and Request for SEARs February – March 2022	<ul style="list-style-type: none"> Identify sites where potential turbines and other infrastructure may be located Identify relevant stakeholders Renew or refresh contact with potential host landholders and nearby residents to update them about the project Highlight project benefits Gain an understanding of community expectations and concerns Proactively seek stakeholder and community feedback to inform the final design. <p><i>Level of engagement: inform, consult and engage</i></p>	<ul style="list-style-type: none"> Send letters to landowners, local authorities and other relevant stakeholders Conduct face-to-face meetings with stakeholders to provide a briefing on the proposal, and undertake local doorknocks Update stakeholder database Update Project website Hold community open days to provide information about the proposed wind farm Establish a project email address and postal address Provide update on GPG Australia website with key holding messages Send out newsletters to surrounding communities. <p><i>Targets primary stakeholders</i></p>
Planning and approvals (following receipt of SEARs) July – October 2022	<ul style="list-style-type: none"> Provide opportunities for stakeholder and community engagement SSD application to DPE Highlight project benefits Public exhibition of SSD application. <p><i>Level of engagement: inform</i></p>	<ul style="list-style-type: none"> Engage with stakeholders including the local community, and provide a report on engagement for inclusion in SSD application Update project website and continue to monitor community information line Social media monitoring Send out information flyer Continue one-on-one consultation with community members, especially those that are highly impacted and/or previously lodged objections Hold community information session/s early in the public exhibition period Explore opportunities for community partnerships where appropriate. Establish CCC in accordance with the SEARs. <p><i>Targets all stakeholder levels</i></p>
SSD Determination December 2022 – March 2023	<ul style="list-style-type: none"> Provide early information about the outcomes of the determination, and any changes Provide information about next steps <p><i>Level of engagement: inform</i></p>	<ul style="list-style-type: none"> Conduct face-to-face meetings to brief stakeholders on project timing Provide project update via website, community flyer or newsletter Establish community partnerships Continue to respond to inquiries via phone and email Provide media release/s to local media Social media monitoring Review and update communication and engagement plan as needed. <p><i>Targets all stakeholder levels</i></p>

Project phase	Objectives	Planned/completed engagement activities*
Construction <i>Planned – Mid 2023 – mid 2024</i>	<ul style="list-style-type: none"> Provide early information about any project changes and uncertainty Highlight project benefits Actively address concerns by responding to complaints and enquiries in a timely manner Review and update stakeholder mapping and associated risks Optimise utilisation of local services and staff for construction works. <p><i>Level of engagement: inform and consult</i></p>	<ul style="list-style-type: none"> Provide targeted notifications of planned construction activity to affected stakeholders Provide quarterly project updates to broader stakeholder database Provide one-on-one consultations as required/needed Maintain and expand proactive communication via phone and email Provide media release Allow for site tours and briefings Social media monitoring Review and update communication and engagement plan as needed Develop community partnerships Note the next NSW election will be held in 2023 – consider opportunities for announcements. <p><i>Targets primary and secondary stakeholders</i></p>
Operations <i>Planned – 2024 – 2054</i>	<ul style="list-style-type: none"> Ensure good ongoing community relations Actively address concerns by responding to complaints and enquiries in a timely manner. <p><i>Level of engagement: inform and consult</i></p>	<ul style="list-style-type: none"> Provide one-on-one consultations Maintain and expand proactive communication via phone and email Allow for site tours and briefings Regular meetings / community reference group (if needed) Maintain community partnerships. <p><i>Targets primary and secondary stakeholders</i></p>
End of life planning and management <i>Planned – 2054</i>	<ul style="list-style-type: none"> Provide early information about any project changes and uncertainty Actively address concerns by responding to complaints and enquiries in a timely manner Investigate the feasibility of ongoing community partnerships. <p><i>Level of engagement: inform</i></p>	<ul style="list-style-type: none"> Provide one-on-one consultations Maintain and expand proactive communication via phone and email Regular meetings community reference group (if needed) Potentially continue community partnerships. <p><i>Targets primary and secondary stakeholders</i></p>

*Dependent on, and in line with, restrictions in place due to COVID-19 pandemic.

A detailed calendar for recommended upcoming engagement activities during the planning and approvals phase is available in [Appendix B](#).

Appendix A – IAP2 Spectrum

The IAP2 Federation has developed the Spectrum to help groups define the public’s role in any public participation process. The IAP2 Spectrum is quickly becoming an international standard.

Table A.1 IAP2’s Public Participation Spectrum

Increasing impact on the decision →					
	Inform	Consult	Involve	Collaborate	Empower
Public Participation Goal	To provide the public with balanced and objective information to assist them in understanding the problem, alternatives, opportunities and/or solutions.	To obtain public feedback on analysis, alternatives and/or decisions.	To work directly with the public throughout the process to ensure that public concerns and aspirations are consistently understood and considered.	To partner with the public in each aspect of the decision including the development of alternatives and the identification of the preferred solution.	To place final decision making in the hands of the public.
Promise to the Public	We will keep you informed.	We will keep you informed, listen to and acknowledge concerns and aspirations, and provide feedback on how public input influenced the decision.	We will work with you to ensure that your concerns and aspirations are directly reflected in the alternatives developed and provide feedback on how public input influenced the decision.	We will look to you for advice and innovation in formulating solutions and incorporate your advice and recommendations into the decisions to the maximum extent possible.	We will implement what you decide.

Appendix B –Stakeholder and Community Engagement Activities Calendar

Table B.1 Planned stakeholder and community engagement during the planning and approvals phase

Timeframe	Audience	Activity	Responsible	Discussion
Scoping phase				
January 2021	· All stakeholders	Feedback mechanism and key contact details	GPG	· Establish a project email address and postal address to be used for the project through the scoping, planning and construction phases.
January 2021	· All stakeholders	Establish / update stakeholder database	GPG / ERM	· Establish or review and update a stakeholder database with critical information, such as name, contact details, areas of interest, history with the project, contact made, preferred communication method, etc.
Mid- 2021	· All stakeholders	Update website	GPG / ERM	· Provide a holding message or update on GPG Australia's website (and parent company) to be released just prior to the distribution of letters and newsletter.
Mid-2021	· Directly affected stakeholders · Neighbouring properties	One-on-one meetings and negotiations	GPG	· Send letters to relevant landholders and immediate neighbours, Oberon and Upper Lachlan Shire councils, and any other relevant stakeholders identified in previous engagements. · Follow up with door knock to relevant landholders and immediate neighbours with sentiment survey. · Conduct meeting (via Zoom or in-person) with Oberon Council.
September 2021	· Surrounding neighbours	Newsletter #1	GPG / ERM	· Re-establish newsletter to provide a community update beyond the immediate neighbours to demonstrate proactive engagement with project contact details and visual impact survey (SurveyMonkey link) – letterbox drop.
September 2021	· Surrounding community	Visual impact survey	ERM	· Stakeholders can provide feedback about visual impacts of the proposed project and more generally about wind farms via a survey. This will be provided during door knocks and distributed via letterbox drop to surrounding communities. · It would be preferable to also organise attendance at several community events to conduct these as intercept surveys for broader feedback and insights. Due to the scoping report timeframe this may not be feasible.

Planning and approvals phase

Timeframe	Audience	Activity	Responsible	Discussion
Late 2021 / early 2022	<ul style="list-style-type: none"> Aboriginal representatives 	Letters, email, advertisements	ERM	<ul style="list-style-type: none"> Notification and registration for heritage field survey as per Due Diligence Guidelines.
May 2022	<ul style="list-style-type: none"> All stakeholders 	Develop website	GPG	<ul style="list-style-type: none"> Create dedicated project website with high quality imagery, project information, contact information, FAQs and factsheets.
July 2022	<ul style="list-style-type: none"> Local Oberon Council staff Mayors General Managers Councillors Planning divisions 	Online briefing meeting	GPG	<ul style="list-style-type: none"> Provide one-on-one update or a presentation to the Mayor, the General Managers, and/or planning staff. Briefing to cover (options): <ul style="list-style-type: none"> How their feedback from the scoping phase was integrated Project benefits Project area, indicative timelines Planned consultation Informal discussions to gain a better understanding of community needs and how to best engage with them If possible, seek feedback on who else needs to be consulted to ensure stakeholder lists are current Gather Council contacts for different actions (survey work, traffic, waste / recycling etc.) Meetings can be held virtually in light of current COVID-19 requirements.
June / July 2022	<ul style="list-style-type: none"> Community All stakeholders 	Collateral and logistics	GPG/ ERM	<ul style="list-style-type: none"> Begin planning community information sessions, including selecting dates, booking venues, developing information boards and displays, survey, developing advertising and promotion of the event, media release, coordinating consultants and experts, and other event management logistics.
11 July 2022	<ul style="list-style-type: none"> All stakeholders 	Website update with survey	GPG	<ul style="list-style-type: none"> Website update with live community feedback survey link and information session details.
13 July 2022	<ul style="list-style-type: none"> Community All stakeholders 	Newsletter #2	GPG / ERM	<ul style="list-style-type: none"> Newsletter to provide a project update letterbox drop/email out to neighbouring residences and the stakeholder database, notifying them of relevant project updates, information session details, and next steps.
21 July 2022	<ul style="list-style-type: none"> All stakeholders 	Stakeholder letters	GPG / ERM	<ul style="list-style-type: none"> Develop stakeholder letters tailored to each stakeholder group, advising of upcoming community information sessions and

Timeframe	Audience	Activity	Responsible	Discussion
				<ul style="list-style-type: none"> providing an update on the project overview and timeline. Sent via GPG Australia Project inbox.
22 July 2022	<ul style="list-style-type: none"> Community All stakeholders 	1800 phone line	GPG	<ul style="list-style-type: none"> Develop phone scripts and escalation procedures for 1800-line. Activate 1800 number.
14 - 27 July 2022	<ul style="list-style-type: none"> All stakeholders 	Advertise community information sessions	GPG / ERM	<ul style="list-style-type: none"> Radio and newspaper advertising in the Oberon Review, Crookwell Gazette and 2BS radio in the two weeks leading up to community information sessions.
3 August 2022	<ul style="list-style-type: none"> Community All stakeholders 	Media release	GPG, ERM support if needed	<ul style="list-style-type: none"> Provide media release following community engagement and ahead of public exhibition period.
28 - 29 July 2022 (2 days)	<ul style="list-style-type: none"> Community All stakeholders 	Community drop-in / information sessions	GPG / ERM + consultants	<ul style="list-style-type: none"> Community drop-in sessions in Black Springs to update the local community. Held at Black Springs Community Hall – consider different venue for next engagement. Encouraged people to subscribe to email newsletter and complete community feedback survey.
August 2022	<ul style="list-style-type: none"> All stakeholders 	Stakeholder letters	GPG / ERM	<ul style="list-style-type: none"> Distribute a follow-up stakeholder letter summarising feedback from the EIS phase engagement. To be sent via GPG Australia Project inbox
Mid-August 2022	<ul style="list-style-type: none"> Internal 	EIS submission – Community and Stakeholder Engagement report	GPG / ERM / Tract	<ul style="list-style-type: none"> Prepare report summarising engagement during the EIS phase. Provide to Tract for submission on behalf of GPG Australia.
August 2022	<ul style="list-style-type: none"> Internal 	Review and update Community and Stakeholder Engagement Plan	GPG / ERM	<ul style="list-style-type: none"> Review and update communication and engagement plan and approach as needed.
Late 2022	<ul style="list-style-type: none"> Community All stakeholders 	Newsletter #4	GPG / ERM	<ul style="list-style-type: none"> Project update mail out to all stakeholders in contact database notifying of project updates and any upcoming events. Letterbox drop to neighbouring residences as well as email distribution.



Paling Yards Development Pty Ltd

Paling Yards Wind Farm

Community and Stakeholder Engagement
Report

5 September 2022

Project No.: 0578575

Tract



Document details	
Document title	Paling Yards Wind Farm
Document subtitle	Community and Stakeholder Engagement Report
Project No.	0578575
Date	5 September 2022
Version	2.0
Author	Kellie Wilson
Client Name	Tract for Paling Yards Development Pty Ltd

Document history

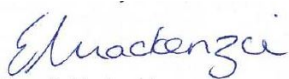
Version	Revision	Author	Reviewed by	ERM approval to issue		Comments
				Name	Date	
Draft	00	K. Wilson	E. Mackenzie	K. Bradfield	19/08/2022	For client review
Final	01	K. Wilson	E. Mackenzie	K. Bradfield	02/09/2022	Final

Signature Page

5 September 2022

Paling Yards Wind Farm

Community and Stakeholder Engagement Report



Elspeth Mackenzie
Project Manager



Karie Bradfield
Partner

Environmental Resources Management Australia Pty Ltd
Level 15 309 Kent St
Sydney NSW 2000

© Copyright 2022 by The ERM International Group Limited and/or its affiliates ('ERM'). All Rights Reserved. No part of this work may be reproduced or transmitted in any form or by any means, without prior written permission of ERM.

CONTENTS

1.	INTRODUCTION	1
1.1	Purpose	1
1.2	Project Overview.....	1
1.3	Engagement Objectives.....	4
2.	STAKEHOLDER IDENTIFICATION.....	5
3.	COMMUNITY AND STAKEHOLDER ENGAGEMENT	6
3.1	Engagement Approach	6
3.2	Summary of Community Consultation	8
3.3	Summary of Consultation with Government Agencies	10
3.4	Community Views	12
	3.4.1 Community feedback survey.....	12
3.5	Engagement to be conducted	15

APPENDIX A COMMUNITY FEEDBACK SURVEY

List of Tables

Table 2.1	Key Stakeholders	5
Table 3.1	Engagement Approach	6
Table 3.2	Summary of Community Consultation	8
Table 3.3	Summary of Consultation with Government Agencies	10
Table 3.4	Community Views	12

List of Figures

Figure 1-1	Locality Plan	2
Figure 1-2	Project Layout.....	3

1. INTRODUCTION

Environmental Resources Management Australia Pty Ltd (ERM) has been commissioned by Tract on behalf of Paling Yards Development Pty Ltd and Global Power Generation Australia (GPG) to assist with a number of the community and stakeholder engagement activities related to the proposed Paling Yards Wind Farm (the Project) including the preparation of this engagement outcomes report.

Stakeholder engagement is an integral part of any major development. As part of the development of the Project and preparation of the Environmental Impact Statement (EIS), consultation has been, and will continue to be, undertaken with a range of stakeholders including various local and NSW Government agencies, the local community, special interest groups, and neighbouring and proximate landholders.

GPG and Paling Yards Development Pty Ltd are committed to ensuring public concerns and comments are considered, and that attempts are made to avoid, minimise or mitigate potential impacts to the extent possible. The *Undertaking Engagement Guidelines for State Significant Projects* (DPIE, 2021) require upfront and ongoing engagement for all State significant projects.

A Community and Stakeholder Engagement Plan was prepared for Paling Yards Wind Farm and updated in August 2022. Engagement for the Project throughout this phase has been led by ERM communication and engagement specialists who are trained in best practice methodologies under the International Association for Public Participation (IAP2).

1.1 Purpose

This document provides an overview of the engagement activities carried out following receipt of the SEARs and in the lead up to the EIS submission which will be undertaken via Tract.

An updated version of the Community and Stakeholder Engagement Plan has also been provided to Tract.

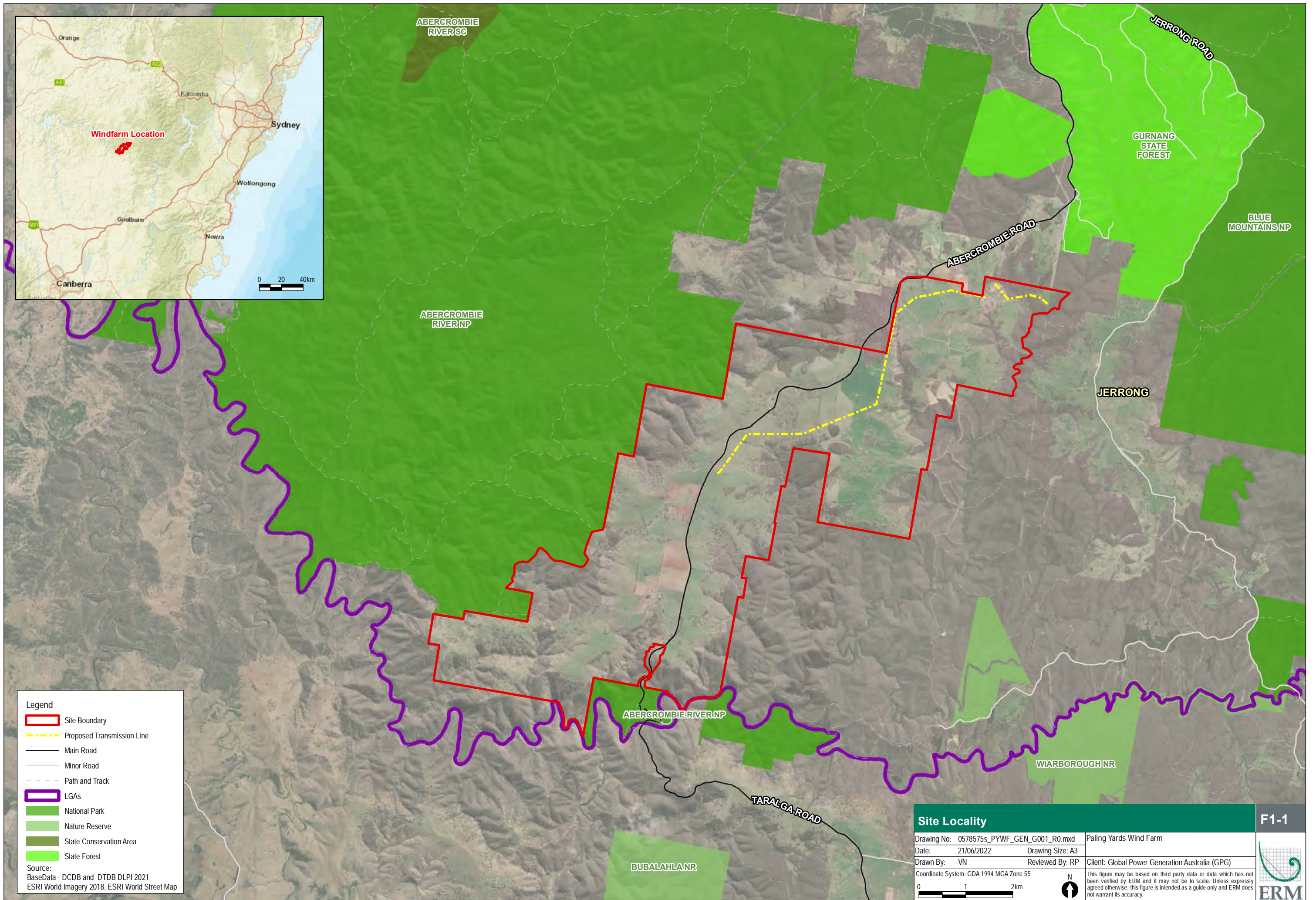
1.2 Project Overview

Paling Yards Development Pty Ltd is seeking approval to construct and operate the Paling Yards Wind Farm, located approximately 60 kilometres (km) south of Oberon and 30 km north of Taralga in the Central Tablelands region of New South Wales (NSW) and within the Oberon Local Government Area (LGA). A regional locality plan is provided in **Figure 1-1**. The Project would supply up to 287 megawatts (MW) of installed capacity renewable energy directly into the national electricity grid by connecting to the existing Mt Piper to Bannaby 500 kilovolt (kV) transmission line to the north east via a proposed 9 km overhead line of 132 kV with potential for a section of up to 500 kV capacity and switching station.

The proposed development involves the construction and operation of:

- 47 wind turbines generators (WTG) with maximum height of 240 metres (m) (to blade tip); and
- ancillary infrastructure including internal access tracks, road upgrades, internal electrical reticulation network (underground), two on-site substations, three meteorological masts, and operation and maintenance buildings.

The Project encompasses approximately 4,600 hectares (ha) (the 'Project Area'). A preliminary Project layout is provided in **Figure 1-2**.

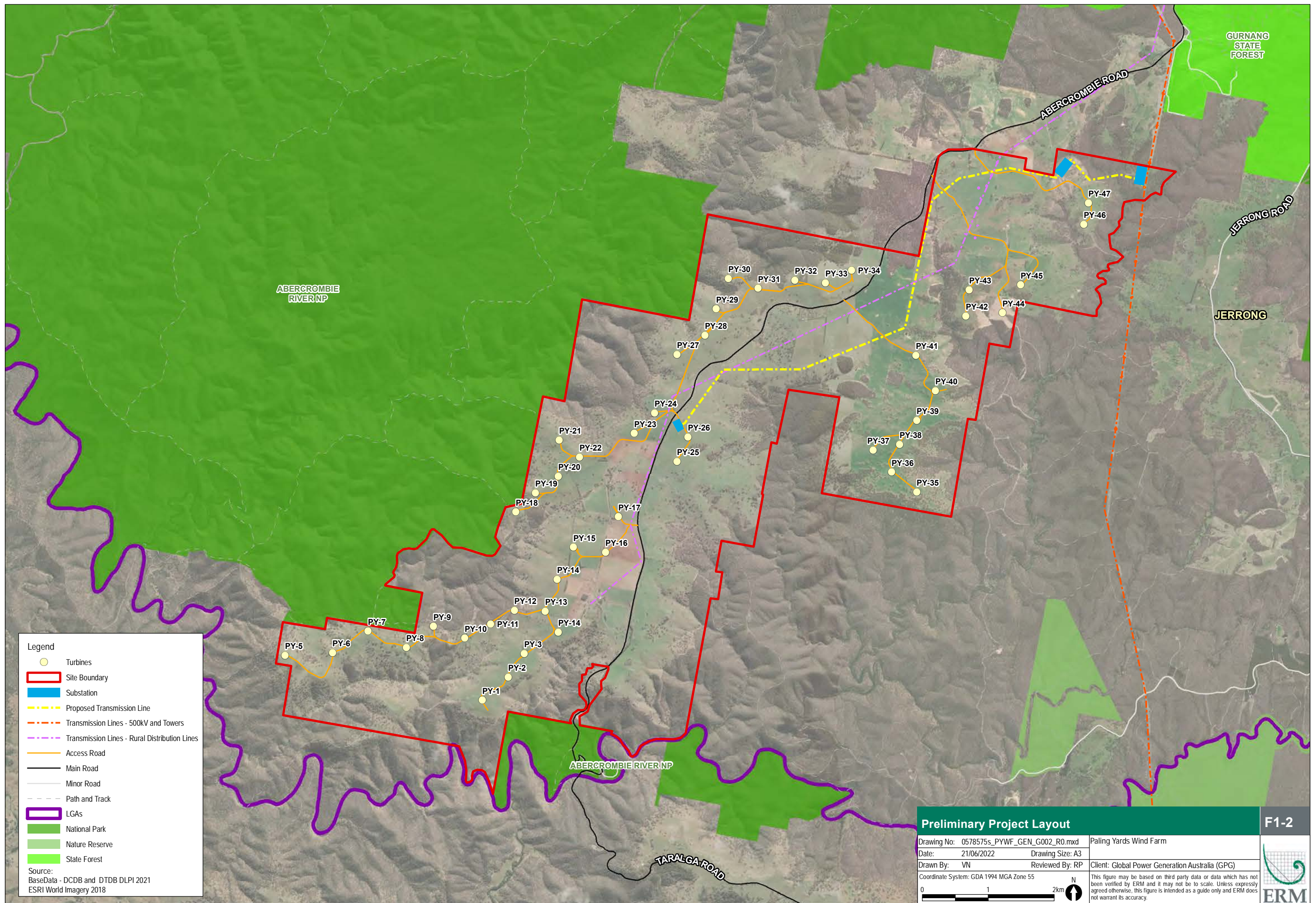


Legend

- Site Boundary
- Proposed Transmission Line
- Main Road
- Minor Road
- Path and Track
- LGAs
- National Park
- Nature Reserve
- State Conservation Area
- State Forest

Source:
BaseData - DCDB and DTDB DLPI 2021
ESRI World Imagery 2018, ESRI World Street Map

Site Locality		F1-1
Drawing No: 0578575s_PYWF_GEN_G001_R0.mxd	Paling Yards Wind Farm	
Date: 21/06/2022	Drawing Size: A3	Client: Global Power Generation Australia (GPG) <small>This figure may be based on third party data or data which has not been verified by ERM and it may not be to scale. Unless expressly agreed otherwise, this figure is intended as a guide only and ERM does not warrant its accuracy.</small>
Drawn By: VN	Reviewed By: RP	
Coordinate System: GDA 1994 MGA Zone 55		



Legend

- Turbines
- Site Boundary
- Substation
- Proposed Transmission Line
- Transmission Lines - 500kV and Towers
- Transmission Lines - Rural Distribution Lines
- Access Road
- Main Road
- Minor Road
- Path and Track
- LGAs
- National Park
- Nature Reserve
- State Forest

Source:
BaseData - DCDB and DTDB DLPI 2021
ESRI World Imagery 2018

Preliminary Project Layout		F1-2
Drawing No: 0578575s_PYWF_GEN_G002_R0.mxd	Paling Yards Wind Farm	
Date: 21/06/2022	Drawing Size: A3	
Drawn By: VN	Reviewed By: RP	Client: Global Power Generation Australia (GPG)
Coordinate System: GDA 1994 MGA Zone 55		
		<p>This figure may be based on third party data or data which has not been verified by ERM and it may not be to scale. Unless expressly agreed otherwise, this figure is intended as a guide only and ERM does not warrant its accuracy.</p>

1.3 Engagement Objectives

The objectives of community and stakeholder consultation are outlined in the Community and Stakeholder Engagement Plan as follows:

- Provide a guide for the planning and implementation of communications and stakeholder engagement in support of approval for the Project;
- Provide an indication of the intended communications and engagement activities to be undertaken during the planning phase;
- Identify and classify stakeholders with an interest in the Project;
- Develop and implement a clear action plan for future engagement approaches across all stakeholder groups;
- Outline communication tools, channels and a timeline for implementation;
- Provide clear, consistent and compelling messaging about the benefits of the Project;
- Identify opportunities for stakeholders and the community to raise concerns and provide feedback;
- Identify opportunities to build positive sentiment across local media, residents and stakeholders; and
- Identify opportunities to reduce or mitigate the risk of community resistance to the Project.

2. STAKEHOLDER IDENTIFICATION

Key stakeholders identified as potentially having an interest in the Project are listed in **Table 2.1**.

Table 2.1 Key Stakeholders


Stakeholder	Specific parties	Form of Consultation, Potential Interests/Concerns
Host landowners <i>IAP2 engagement level: Consult</i>	Landowners with the potential to host infrastructure, have already engaged in discussion or have already agreed to host infrastructure.	Individual consultation, access to private land, noise and other operational impacts including impacts on livestock, visual amenity, health and safety, security, construction disruption, remuneration, land value.
Immediate neighbours <i>IAP2 engagement level: Consult</i>	Neighbouring dwellings within 5km of the proposed site and along the transmission corridor.	Individual consultation, access to private land, local character, noise and other operational impacts, visual amenity, property values, health and safety, security and privacy, construction disruption, impacts of construction traffic.
Surrounding communities <i>IAP2 engagement level: Consult</i>	Community members who live outside of a 5km radius of the proposed site and the transmission corridor, including Porters Retreat and Curraweela and surrounds.	Community consultation, community wellbeing, economic benefits / impacts, impacts of construction traffic, health and safety, visual impacts, property values.
Aboriginal communities <i>IAP2 engagement level: Consult</i>	Registered Aboriginal Parties (RAPs) as identified through the Aboriginal Cultural Heritage Consultation Requirements for Proponents (DECCW 2010) including: <ul style="list-style-type: none"> ■ Pejar LALC ■ Corroboree Aboriginal Corporation ■ Gunjeewong Cultural Heritage Corporation ■ Didge Ngunawal Clan Aboriginal Corporation 	Community consultation, heritage assessment, ongoing management of cultural values.
Approving authority <i>IAP2 engagement level: Consult</i>	Department of Planning and Environment	Community feedback, environmental impacts, project approval, regulatory compliance.
Local Council <i>IAP2 engagement level: Consult</i>	Oberon Council: <ul style="list-style-type: none"> ■ Cr Mark Kellam (Mayor) ■ Gary Wallace (General Manager) ■ Mark Hitchenson (Development Planner) ■ Elected Councillors Upper Lachlan Shire Council (adjacent LGA) <ul style="list-style-type: none"> ■ Pam Kensit (Mayor) ■ Colleen Worthy (General Manager) 	Jobs, economic impacts, opportunities for tourism and other industry benefits. Community consultation, community wellbeing, impact on local residents and businesses, economic benefits, impacts on local roads and infrastructure.


3. COMMUNITY AND STAKEHOLDER ENGAGEMENT

3.1 Engagement Approach

A range of engagement tools were deployed to engage with and seek feedback from the various stakeholders as detailed in **Table 3.1**.

Table 3.1 Engagement Approach

Approach	Description
Stakeholder Briefings	Specific, targeted meetings were held to discuss the Project and facilitate in-depth engagement and transfer of Project information. This included meetings with local council, various regulatory authorities, as well as with individuals, and neighbouring properties.
Newsletter	Newsletters help ensure that there is a consistent external message presented on key issues and progress of the Project. Two newsletters have been sent directly to host landowners and immediate neighbours within 5km of the Project site and via email to stakeholders, in September 2021 and July 2022.
Media Engagement	Media release published on the GPG website following community information sessions on 28 and 29 July 2022. News - Global Power Generation (globalpower-generation.com)
Website	In mid-July 2022, a new standalone Project website was launched. The website is complementary to the GPG Australia website and includes links to planning submissions, project updates, newsletters, and frequently asked questions (FAQs). Paling Yards Wind Farm website: Paling Yards Wind Farm - Global Power Generation Australia (globalpower-generation.com.au) GPG Australia website
Community information sessions	An open invitation was extended to community and local stakeholders to attend community information sessions on 28 and 29 July 2022. The sessions enabled locals to speak to members of the Project Team, ask questions and provide feedback. The format was a 'drop-in session' with key Project information presented on boards and summarised in a FAQ hand-out booklet. A presentation was provided to a group of community members at the session held on 29 July 2022 in response to lines of enquiry. A total of 22 community members attended the sessions, with two Councillors attending both sessions. Photograph: Community Information Session 28 July 2022
	

Approach	Description
	<p>Photograph: Community Information Session 29 July 2022</p> 
Community Surveys	<p>Two surveys have been undertaken which aimed to identify community sentiment towards the Project, as well as to capture quantitative feedback. The first of these in September 2021 was letterbox dropped within a 5km radius of via a QR code in the newsletter, for online completion. The July – August 2022 survey was provided in hard copy at the community information sessions and was available to complete via the Project website using a QR code posted around the venue. This QR code was also included in a newsletter letterbox drop, and in advertising; the Oberon Review and online publication the Crookwell Gazette. Any visitation to the Project website resulted in a home page pop up with link directing users to the survey.</p> <p>A copy of the surveys can be found in Appendix A.</p>
Direct Enquiries	<p>Throughout preparation of the EIS, community and stakeholders have been able to make direct enquiries to the Project team through the following channels:</p> <ul style="list-style-type: none"> ■ Web: palingyardswindfarm.globalpower-generation.com.au ■ Phone: 1800 457 181 ■ Email: palingyardswindfarm@globalpower-generation.com.au <p>In addition to these channels being included on all collateral, correspondence, stakeholder letters, local paper printed and online news publications, the Project phone number was also promoted via local radio station 2BS in conjunction with community information session details.</p>
Emails, Phone Calls and online meetings	<p>The Project Team has liaised with relevant government agencies and community stakeholders via email correspondence and phone calls throughout the scoping phase of the Project and the preparation of the EIS.</p> <p>Online meetings using Teams have also been effective in delivering consultation to stakeholders.</p>
Collateral	<p>A project overview brochure was available for local community members to take-away at the community information sessions in July 2022.</p>

3.2 Summary of Community Consultation

This section highlights engagement carried out over the life of the Project. In May 2022, following receipt of the Planning Secretary's Environmental Assessment Requirements (SEARs) in March, the Project team re-engaged with landowners within 5 km of the site with a focus on insights related to visual assessment. The table below highlights consultation prior to EIS Submission.

The broader community were encouraged to participate in consultation throughout July and into August 2022. Local advertising via traditional media in the Oberon Review, online publication the Crookwell Gazette and radio advertising on 2BS were used to provide details about the community information sessions and encourage people to visit the website and complete a survey.

Community information sessions were staffed by GPG Australia and subject matter experts from Tract, ERM, Transgrid and SLR to respond to any noise related enquiries.

There were 22 local community members who attended the community information sessions and 18 surveys completed. Insights into community views are included in **Table 3.4**.

Table 3.2 Summary of Community Consultation

Type	Date Commenced	Duration	Done by
Previous Application			
Initial Consultation	May 2011	14 days	Union Fenosa
Community Consultative Committee	Nov 2012	14 days	Union Fenosa
Community Engagement	May 2014	28 days	Union Fenosa
Current Application			
Notice of Intent to owners within 5km radius, including: <ul style="list-style-type: none"> ■ Letter drops, door knocks ■ Emails and phone calls ■ Newsletter ■ Site meetings 	Jan 2021	N/A	GPG
Additional letter drops to dwellings within a 5km radius done, including: <ul style="list-style-type: none"> ■ Letter drops, door knocks ■ Emails and phone calls 	Feb 2021	N/A	GPG
GPG engaged with neighbours to discuss neighbour agreements: <ul style="list-style-type: none"> ■ Letter drops, door knocks ■ Emails and phone calls ■ Face to face meetings 	Aug 2021	ongoing	GPG
Initial Consultation as per CSE Plan Newsletter circulated to all owners within 5km radius (including Oberon Council and Upper Lachlan Shire Council).	Aug 2021	28 days	GPG/ERM
Early engagement with Aboriginal communities and representatives as part of the cultural and heritage assessment	Sept 2021	Ongoing	ERM/ERM
Project update sent to Oberon City Council and Upper Lachlan Council	Sept 2021	N/A	GPG
A community feedback survey was undertaken	Sept 2021	28 days	ERM
Notification and registration to Aboriginal representatives for heritage field survey	Sept 2021	Ongoing	ERM
Aviation Impact Assessment circulated to relevant stakeholders for comments (Airservices Australia,	Sept 2021	28 days	Aviation Projects

CASA, Department of Defence, NSW Rural Fire Services, Oberon Council, Royal Flying Doctor Services)			
Newsletters and emails to Oberon Council and Upper Lachlan Shire Council General Managers	Oct 2021	Ongoing	GPG/ERM
Scoping Report - Secretary's Environmental Assessment Requirements			
Visual assessment: <ul style="list-style-type: none"> ■ Phone calls and letterbox drop to landowners within 5km of the site ■ Newsletter (September 2021 edition) via post on request 	May 2022	1 day	GPG
Paling Yards Wind Farm website live	11 July 2022	Ongoing	GPG
Paling Yards Wind Farm survey live	11 July 2022	33 days	ERM
Newsletter letterbox drop to landowners within 5km of the site	13 July 2022	1 day	GPG
Newsletter eDM	13 July 2022	1 day	GPG
Local paper advertisement – Oberon Review: <ul style="list-style-type: none"> ■ Community information sessions ■ QR code to complete survey online 	14 July 2022 21 July 2022	2 days	ERM/GPG
Local radio advertisement – 2BS Radio live read: <ul style="list-style-type: none"> ■ Community information sessions ■ 1800 number promotion 	20 July 2022	6 days	ERM
Stakeholder letters distributed via email: <ul style="list-style-type: none"> ■ Community members (existing database) ■ Local groups and entities ■ Oberon Council including newsletter ■ Government departments and agencies ■ Registered Aboriginal Parties 	21 July 2022	1 day	GPG/ERM
Local online advertisement – Crookwell Gazette: <ul style="list-style-type: none"> ■ Community information sessions ■ Website link to survey 	24 July 2022	6 days	ERM
Online meeting with Oberon Council and Councillors	26 July 2022	1 day	GPG
Community information sessions at Black Springs Community Hall	28-29 July 2022	2 days	GPG/ERM /Tract/SLR/ Transgrid

Note: Community engagement between July – November 2021 was limited by the COVID-19 regulations and measures across NSW. The team were unable to undertake any face-to-face information sessions or doorknocks.

3.3 Summary of Consultation with Government Agencies

The following table highlights stakeholder engagement carried out with government agencies over the life of the Project.

Table 3.3 Summary of Consultation with Government Agencies

Stakeholder	Date	Engagement activities
Department of Defence	17 September 2021	Department of Defence have been provided details to achieve confirmation of any modifications required to the scale and height of development. The Project team are awaiting feedback from the Department.
Royal Flying Doctor Service (RFDS)	24 September 2021	The Royal Flying Doctor Services (RFDS) confirmed that their flight operations and safety teams found no issues arising that would impact RFDS operations.
Oberon Council	19 October 2021	Oberon Council confirmed that, from an aviation impact perspective, assessment of the proposal will be undertaken as part of the EIS process following submission to DPE.
Airservices Australia	8 November 2021	Airservices Australia confirmed that the proposal would not have an impact on any designed instrument procedures, facilities or operations at any airports.
NSW Rural Fire Service	10 November 2021	NSW Rural Fire Service (RFS) confirmed that they have no feedback regarding the Project following review of the Aviation Impact Assessment (AIA). Going forward RFS consider the Project as with any other potential hazard to aircraft operations.
Heritage NSW	13 February 2022	Heritage NSW provided confirmation of no concerns regarding the Project.
Crown Lands	16 Feb 2022 to 17 Aug 2022	Crown Lands noted that Crown roads and a Crown reserve are located within the project footprint. GPG has provided key project details in an ongoing manner. Crown Lands advised that an easement application should be made once infrastructure locations are finalised.
Department of Primary Industries – Agriculture and Fisheries	22 February 2022	Department of Primary Industries – Agriculture and Fisheries confirmed the relevant Environmental Assessment Requirements (EARs) for the Paling Yards Wind Farm and provided guidelines for assessments.
DPE - Biodiversity, Conservation and Science (BCS) Directorate	23 February 2022	The BCS Directorate recommended that the EIS address biodiversity and offsetting, water and soils, flooding, and impacts on national parks estate.
NSW National Parks and Wildlife Services	23 February 2022	NSW National Park and Wildlife Service confirmed that assessment of the potential impacts on Abercrombie Rivers National Park will need to be undertaken.
WaterNSW	23 February 2022	WaterNSW confirmed that the subject land is located in the Wyangala Dam Water catchment and requested a Hydrological Assessment be part of the EIS process.
Geoscience Australia	8 July 2022	Geoscience Australia provided confirmation of no concerns regarding the project following a Project overview and additional discussion via email.
NSW Police Force	8 July 2022	NSW Police Force have no objections to the proposed substation location, however note that radio interference would have a significant impact to police service in the area; Mt Defiance with a 28km radius coverage and channel linking to Mt Ryan at over 40km away. Turbines PY-25 and PY-26 are in the potential reflection/scattering interference zone and request to retain 1km separating five turbines; PY-23, PY-24, PY-25, PY-26 and PY-27 to avoid potential impact to telecommunications assets.

Stakeholder	Date	Engagement activities
NSW Spatial Services	8 July 2022	NSW Spatial Services provided feedback regarding the EMI, with no concerns raised. Feedback included the protection of survey marks during construction.
Telstra	8 July 2022	Telstra advised GPG of an existing underground network within the proposed boundary, and instructions to engage 'Dial Before You Dig' for details and potential impacts. Consultation and assessments are ongoing.
Bureau of Meteorology	8 July and 22 July 2022	Bureau of Meteorology have raised concerns regarding potential for impact from 10 turbines, details have been provided to GPG Australia. Consultation is ongoing.
NSW Telco Authority	8 July and 3 August 2022	The NSW Telco Authority raised concerns and provided details to the Project team regarding potential for impact from four turbines.
Transgrid	9 August 2022	Transgrid identified an initial approach to verify interconnection capacity and development assumptions at the point of connection. Consultation will be ongoing in relation to allowing sufficient input into the design and development process. The Project will provide opportunities for site visits to validate or adjust interconnection assumptions. Transgrid attended the community information sessions held on 28 and 29 July 2022.

3.4 Community Views

Throughout engagement the Project team received feedback on a variety of issues from the community as summarised in this section.

3.4.1 Community feedback survey

Completed surveys were from local residents/landowners and a visitor to the area from postcodes 2787, 2580 and 2795.

These surveys indicated that community values most strongly resonated with environment (flora and fauna), farming, and community and family. Respondents particularly noted the value of the natural landscape, rolling hills and Abercrombie River.

While there was a mix of support for the project, 58% strongly or moderately supported the proposed wind farm.

Of the perceived project benefits, clean energy appeared the most significant to respondents.

Surveys indicated that the greatest concerns for the community would be effects on the environment and visual impacts, followed by effects on land use and noise.

The community benefits believed to be of most value were local employment/training opportunities and sustainability initiatives. Respondents particularly requested community benefits that are suited to the unique challenges of living in a rural area.

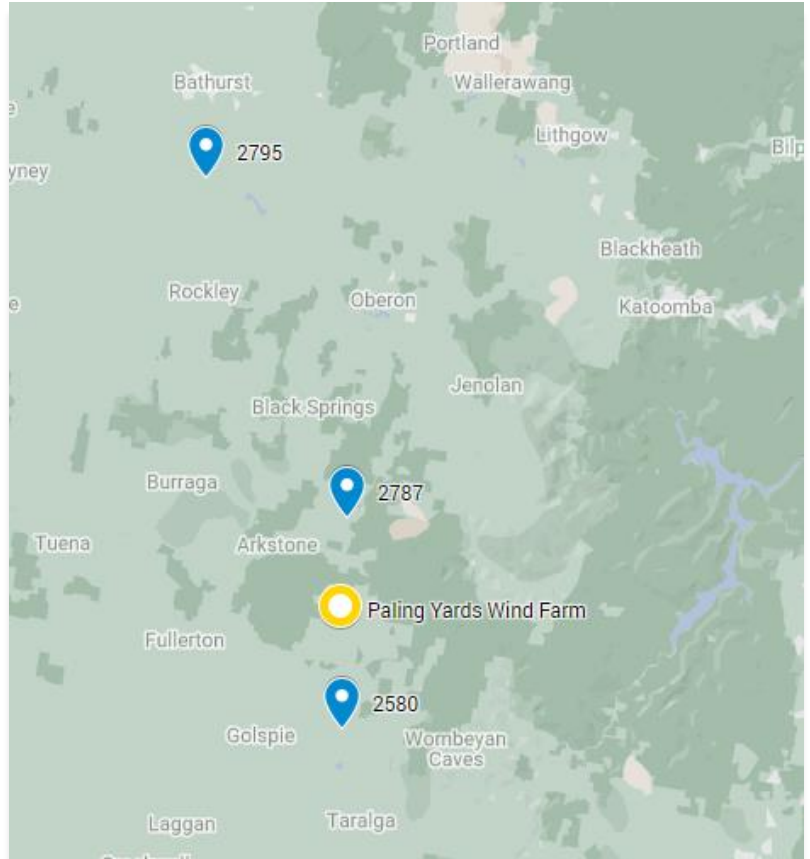


Table 3.4 Community Views

Theme / Topic	Comment Raised
Community benefits	Requests for clarity around community benefits to be derived from the project.
	Requests for information on the threshold for neighbour deeds. Asked to be considered despite being outside the 3.5-4km radius.
	Keen to find out what benefits are/will be available.
	Seeking more information on community benefits and how funds will be spent, especially as there are no local schools etc. to receive funding.
	Seeking clarity on definition of 'close' for financial benefits and eligibility.
	Request for a list of benefits to the community.
	Expressions of concern for volume of any real ongoing benefits – residents even outside the specific radius should be eligible for a monetary payment.
	There should be a monetary payment for those with direct visual impact for the duration of the project life (per annum depending on the visual impact).

Theme / Topic	Comment Raised
	There should be provision and installation of Battery Systems to households for use when there are power outages.
	Request for assistance with the upgrade of not only Abercrombie Road, but also Jerrong and Cosgrove Roads – Increased traffic would be using these bypass roads, around road closures/construction for the wind farm.
	Suggested that there are no benefits to the local community from this project – including commentary that there is no unemployment in the local area and very little accommodation available.
	Community benefits must be substantive and not attempts to influence the community in the project's favour.
	Suggested Education Scholarship for trade and University as a community benefit.
	Installation of electric car adaptors at Oberon Petrol Stations.
	Employment opportunities would be a benefit to the local community.
	Suggested an employee teaching initiative around respecting and protecting native flora and fauna.
Transport and Traffic	Highlighted the bends along O'Connell Road and avenue of trees in the township of O'Connell - wanted to be sure team was well aware of constraints.
	Questions regarding traffic impacts and potential road damage.
	Concerns regarding access to deliver blades – insistent that roads are not suitable due to bends and width.
	Suggestion for blades be air lifted into Paling Yards, exemplified provided of a project in Sweden using helicopters to deliver parts of a bridge.
	Concerns regarding traffic impacts and road access especially transporting the turbines.
	Questions regarding truck impacts and notifications in relation to moving cattle / livestock on roads to other paddocks.
	Construction with trucks and vibration and the 'whoosh' of turbines will scare and impact the native animals, those risks must be mitigated.
	The road network is unsuitable for a project / industry of this magnitude.
	Concern that there will be undue effect on rural roadways while transporting the wind turbines.
Community Engagement	Mayor invited the Project team to attend the Oberon Farmers Market.
	Suggestion that not many of the community knew about the community engagement sessions.
	Suggested seeking more opportunities for Oberon district community to provide feedback and gain more information.
	Expression of preference for hard copy documents, intimidated by too many emails.
	Critical of Black Springs Community Hall as the venue for Community Information Sessions and expressed suspicion of GPG's intentions.
	Critical of current community engagement.
	Felt survey was too restrictive and difficult to complete.
	Suggestion to format future engagement as presentation and Q&A session.
Landscape and Visual	Concern regarding viewpoints of photomontages and appropriate representation.
	Requests for specific visual impact consideration from private properties.
	Recommended use of local landmarks to better help understand turbine dimensions.
	Comments regarding local visual impact, however supportive of the proposed location.
	The rural vista is pristine, and the placement of the wind turbines must not destroy that.

Theme / Topic	Comment Raised
	Request for more maps and examples of visual impacts.
	Concern regarding benefits to homeowners along Jerrong Road who are impacted visually.
Project design	Opinion that the proposed wind farm will have no benefit (and most of the local community), as her farm hardly uses any electricity.
	Scepticism about the efficiency of NSW Government's planning open state forestry for wind farms.
	Suggested the windfarm should be offshore on the east coast where electricity demand is present and has the least impact on the environment and wildlife, and where transmission facilities and substations are already in place.
	Suggested that GPG find an alternative site with a preference near the coast where it is assumed the frequency of wind is higher.
	The project team should give consideration to long-term expansion in the design of the project.
Noise and Vibration	Reference to Crookwell Wind Farm and impact to TV signal.
	Concern that current mobile coverage will be worse-off after construction of the wind farm. Uncertainty if this will be covered in the EMI assessment.
	Expressed desire to maintain a quiet, pristine environment.
	Concern about the effects on noise – compromising the pristine rural amenities of the area.
	Concern that a wind farm will create a visual and audible blight on the landscape.
Biosecurity	Serious concerns about foot-and-mouth disease (FMD) spreading to the area. The emergence and rapid spread of FMD in Indonesia has changed the risk profile for passengers and goods arriving in Australia. Stakeholder concern is high regarding cattle and sheep becoming at risk of FMD.
	Existing (draft) biosecurity risk management plan needs to be updated to include the latest development, guidelines and restrictions.
	Expressed that the Paling Yards area forms its own "bioregion" which is less susceptible to global warming. Therefore do not see any reason for the wind farm to be constructed at this location.
	Comment about preserving the pristine habitat of local animals, particularly protecting animals during the construction phase.
Proponent	Concerned about the ownership of GPG and perceived it as an overseas company with profits sent overseas.
	Comment expressing disapproval in reference to GPG being 25% owned by the Kuwait Investment Authority.
	Query regarding where is funding for the wind farm is coming from.
	Perception that there are no benefits associated with the wind farm except to the company who own it.
	Concern that foreign ownership will not provide benefits to the local community.
Indigenous and Historic Heritage	Concern regarding heritage trees in O'Connell and possible damage in transport process.
	Potential for artefact findings around site, and conceded they may be clustered to the west (outside Project boundary).
Project history	Mentioned previous version of project and concerns from neighbours.
Health risks	Concern about health impacts to the local residents.
Property value	Concerned that property will be devalued – curious about evidence that it will not be.

3.5 Engagement to be conducted

Ongoing engagement with stakeholders will be undertaken during the EIS exhibition and assessment phase. This engagement will include:

- Ongoing meetings with Oberon Council;
- Updating the Project website keeping content relevant and informative;
- Continuation of consultation with community and regulatory stakeholders via various forums, including meetings, presentations, drop-in sessions, attendance at community events such as the Oberon Farmers Market;
- Ongoing monitoring of 1800 phone and email box; and
- Regularly monitor, review and adapt the Community and Stakeholder Engagement Plan over time to ensure it remains effective and encourages community participation.

At conclusion of the public exhibition period, it is anticipated that the Department of Planning and Environment will request GPG's response to issues raised in the submission. GPG will prepare a report, which will be submitted to the Department and be publicly available.

The conditions of approval might require further engagement during detailed design, construction and operation of the wind farm. At the discretion of the Department, this may include establishing a Community Consultative Committee (CCC).

In any instance, GPG will continue to engage with the community in line with the *NSW Government's Planning and Environment Wind Energy Guideline for State Significant wind energy development, December 2016*.

APPENDIX A COMMUNITY FEEDBACK SURVEY

Community feedback survey – July 2022

Global Power Generation Australia is preparing an Environmental Impact Statement (EIS) as part of the development application process for the proposed Paling Yards Wind Farm.

The Paling Yards Wind Farm will deliver renewable, low-cost energy to the national grid, enough to supply 90,000 average Australian homes per annum. The project will be located approximately 30 kilometres north of Taralga and 60 kilometres south of Oberon.

The project team are committed to listening to the community, and greatly value your feedback on this survey.

1. Which description most closely describes you?
 - Local resident/landowner
 - Local business owner/operator
 - Student
 - Visitor to the area
 - Industry / supplier
 - Other (please specify):

2. Please provide your postcode (or postcode of your business or organisation).

3. What do you value the most about your local area? Tick one or more.
 - Community / Family
 - Cultural heritage
 - Employment opportunities
 - Environment (flora and fauna)
 - Farming
 - Local history
 - Recreation opportunities
 - Other (please specify)

4. Are there any particular features or elements within the landscape you value? e.g. memorable hills, trees or buildings, rivers, creeks or townships

5. Based on your understanding of the project, and wind farms in general, what do you believe are the most significant benefits of the project? Tick one or more.
 - Clean energy
 - Employment and supplier opportunities
 - Increased economic activity in the region
 - Land use diversification
 - Local community benefits and investments
 - Lower electricity prices
 - Other (please specify)

6. Based on your understanding of the project, and wind farms in general, are there any areas of concern for you? Tick one or more.

- Effects on land use
- Effects on the environment (flora and fauna)
- Noise
- Traffic
- Visual
- No concerns
- Other (please specify)

7. As part of the project, we are looking to deliver benefits that are meaningful to the local community. What benefits do you believe would be of most value?

- Environment conservation and preservation initiatives
- Funding support for community based organisations
- Heritage preservation initiatives
- Local employment and training opportunities
- Sustainability initiatives
- Other (please specify)

8. Are there any particular initiatives that you believe would deliver a real benefit to your local community? Please describe it below.

9. Are you generally in support of the proposal for a wind farm in Paling Yards?

- Definitely support
- Support
- Not sure
- Don't support
- Strongly against

10. Based on your existing knowledge of the site and surrounding area, are there any aspects that the project team should consider in the design of the project?

11. If you would like to receive regular updates on the Paling Yards Wind Farm, please provide your details below. **Optional***

Thank you for taking the time to complete this community feedback survey.

ERM has over 160 offices across the following countries and territories worldwide

Argentina	The Netherlands
Australia	New Zealand
Belgium	Peru
Brazil	Poland
Canada	Portugal
China	Puerto Rico
Colombia	Romania
France	Russia
Germany	Senegal
Ghana	Singapore
Guyana	South Africa
Hong Kong	South Korea
India	Spain
Indonesia	Switzerland
Ireland	Taiwan
Italy	Tanzania
Japan	Thailand
Kazakhstan	UAE
Kenya	UK
Malaysia	US
Mexico	Vietnam
Mozambique	

ERM's Sydney Office

Level 15 309 Kent Street
Sydney NSW 2000

T: +61 2 8584 8888

www.erm.com